

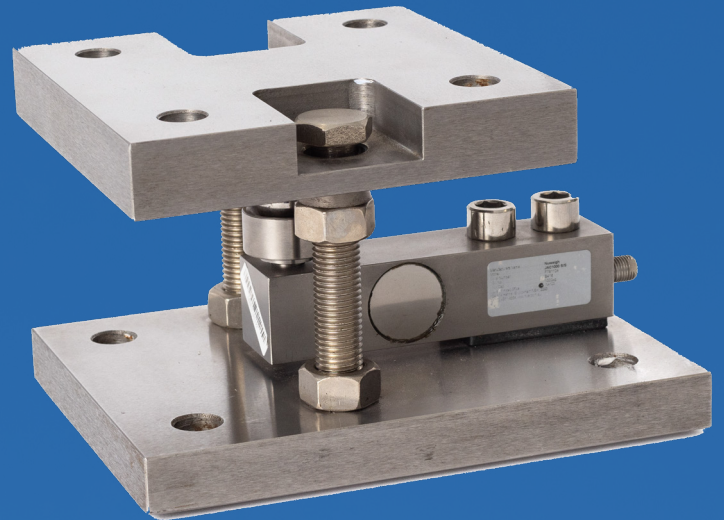
# NUWEIGH®

**NMI**  
Trade  
Approved

## DWP 1979 Load Cell Mount

### Features

- Capacities to 10 tonne on each module
- Legal for Trade use
- Ball and cup design
- Vertical load protection
- Sealed heavy duty load cell
- Simple calibration
- Easy installation
- Earth wire installed
- Compatible with any indicator
- Zinc mild steel models
- Full stainless steel models
- Engineered certified drawings
- High accuracy
- Self aligning installation cones
- Autocad drawings available



Stainless steel and zinc models  
Fully Engineered and certified

### Specifications

Code	Model	Capacity of Each Module
#1548	DWP 1979-1000	1000kg
#1938	DWP 1979-3000	3000kg
#1551	DWP 1979-5000	5000kg
#1547	DWP 1979-10,000	10,000kg

Suitable for  
use on tanks,  
hoppers and  
silos

