

NUWEIGH®

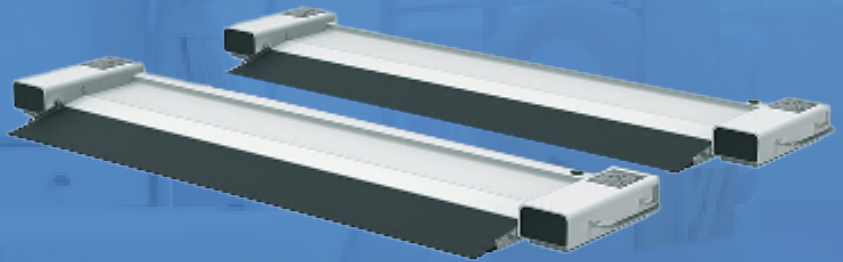
MS6001 Medical Bed Scale



Features

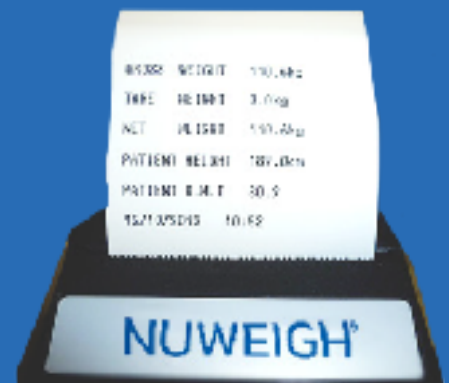
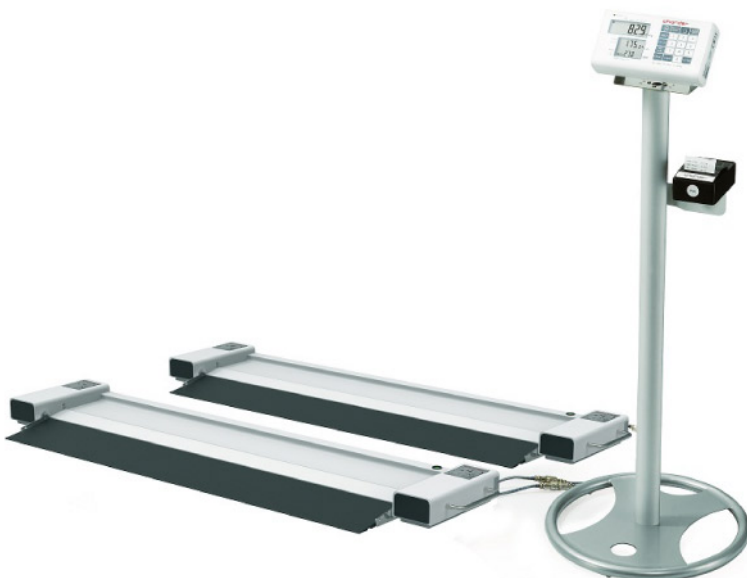
The MS6001 Bed Scale enables precise and safe weighing of patients who are bedridden. The predetermined bed weight is tared allowing for the patient's weight to be accurately determined

- Low profile foldable ramp with caster wheels and handles for portability
- Auto power off function
- Handles for portability
- Hold feature
- Foldout ramp
- Optional stand and thermal printer
- Patient weight change monitor



Code	Model	Capacity	Size
#4853	MS6001	500kg x 100g accuracy	1000mm x 160mm (x2)

ALWAYS FOLLOW THE DIRECTIONS FOR USE



Optional thermal printer to record patient's weight